

# THAMES WHARF STUDIOS

Rainville Road, W6 9HA

WAREHOUSE-STYLE LONDON WORKSPACE WITH UNRIVALLED RIVER VIEWS



# THAMES WHARF STUDIOS IS AN ICONIC RIVERSIDE WORKSPACE, OFFERING A UNIQUE WAREHOUSE-STYLE DESIGN OVERLOOKING THE RIVER THAMES.

Thames Wharf Studios is set on the banks of the River Thames, offering a serene and secluded setting. The building boasts a rich history as a hub of creativity and innovation, which was transformed in the 1980s by renowned architect Richard Rogers. Once an industrial site, it became home to architects, artists and the iconic River Cafe.





# THAMES WHARF STUDIOS

A blend of industrial charm and modern design, nestled along the scenic River Thames, showcasing its vibrant architectural character.

TW2 - AVAILABLE SPACE

20 PARKING SPACES

TW6

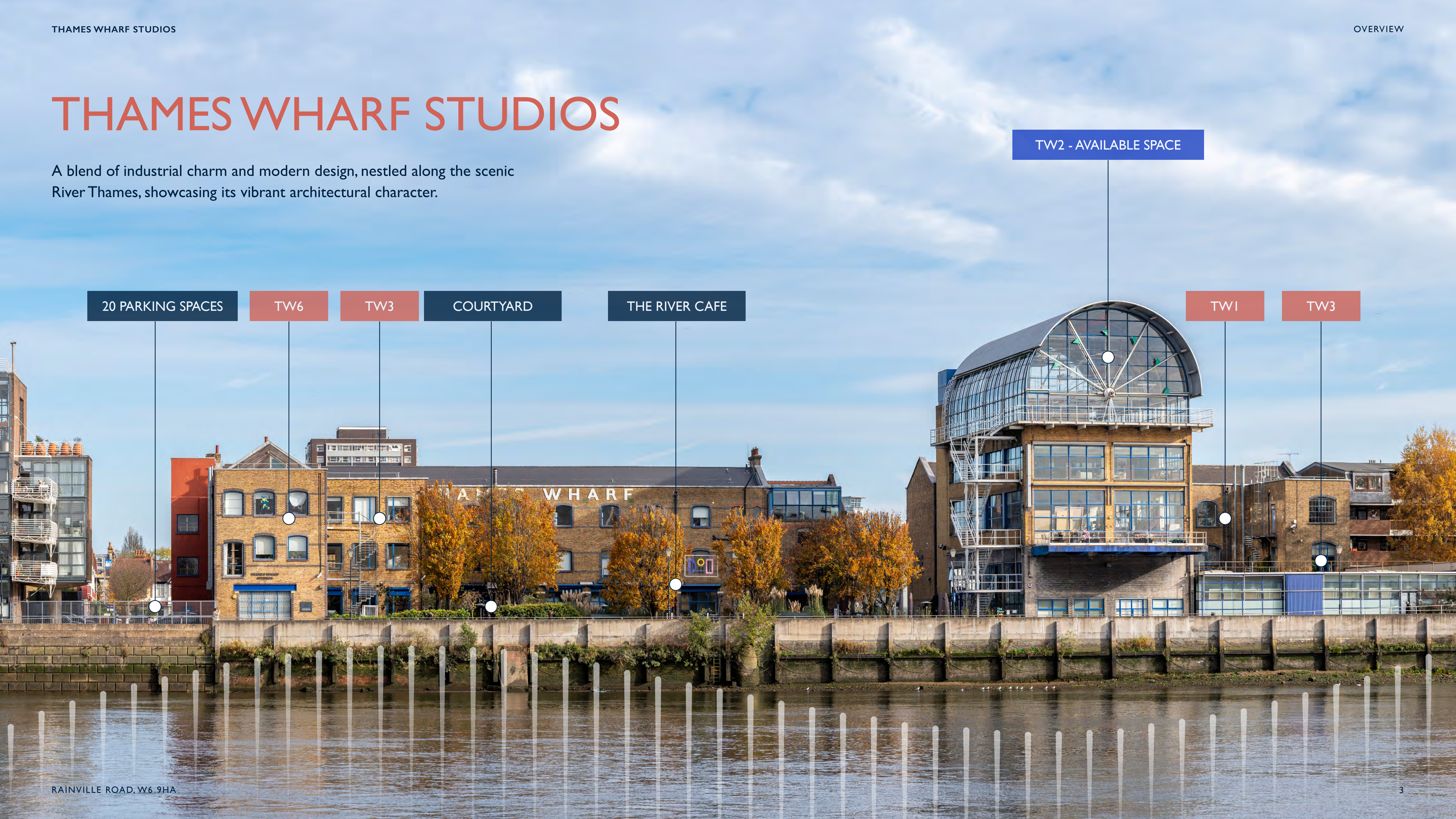
TW3

COURTYARD

THE RIVER CAFE

TW1

TW3





# THAMES WHARF STUDIOS





# THE IDEAL LOCATION TO LIVE AND WORK.

Thames Wharf Studios is ideally located for a harmonious blend of work and leisure. Enjoy picturesque riverside walks and peaceful park strolls, all while being surrounded by dynamic cafés, bars, shops, and public spaces. Additionally, a variety of leisure facilities and gyms are within walking distance of the building.



RAINVILLE ROAD, W6 9HA

**● DRINK, DINE, DISCOVER**

- 01 River Café
- 02 Carbon Kopi
- 03 The Crabtree
- 04 Brasserie Blanc
- 05 The Blue Boat
- 06 Sam's Riverside
- 07 Blue Anchor
- 08 The Rutland Arms
- 09 The Dove
- 10 The Gate
- 11 Bills
- 12 Sam's Kitchen
- 13 Crisp Pizza
- 14 The Pear Tree

**● RETAIL THERAPY**

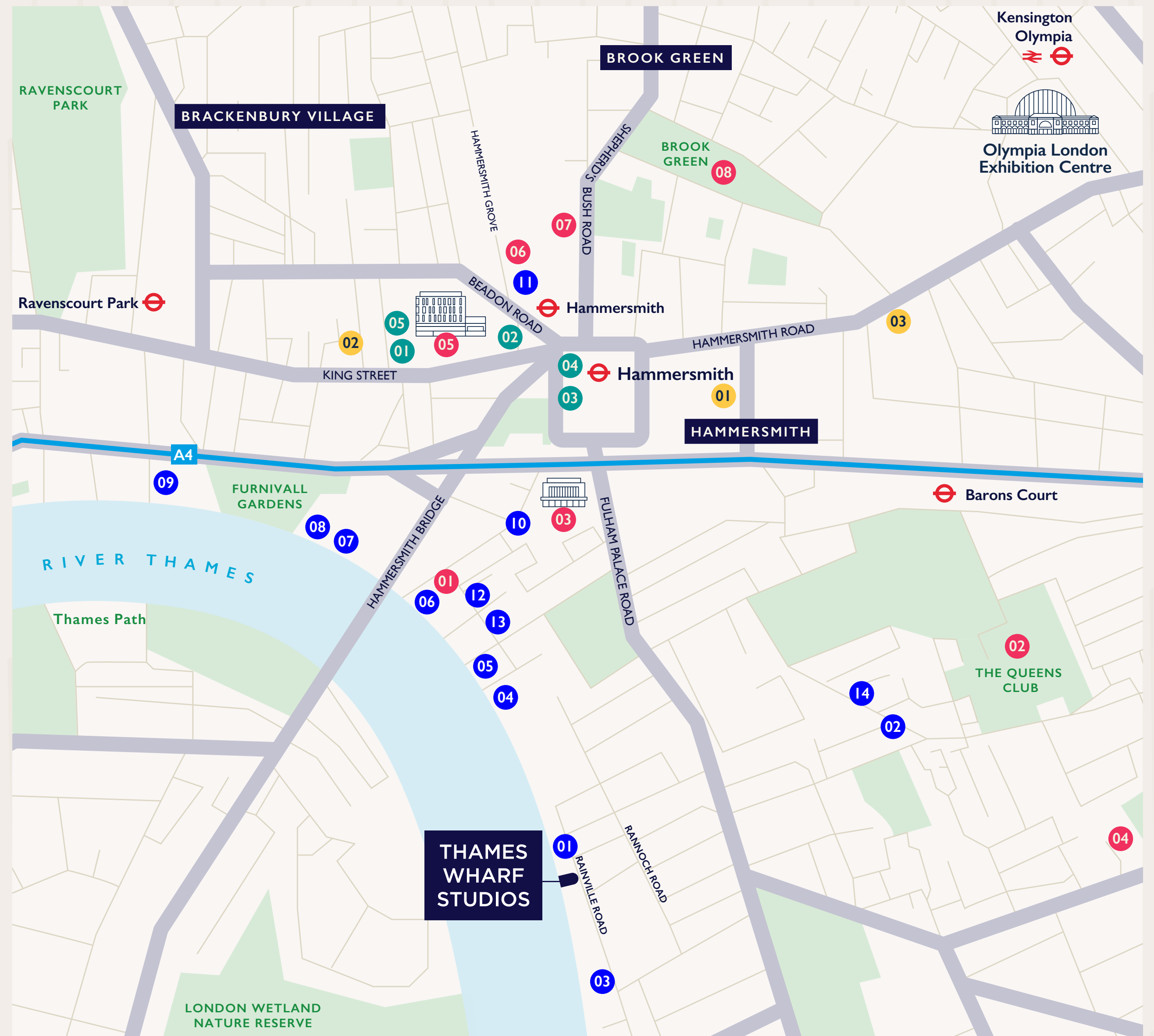
- 01 Livat Hammersmith
- 02 Lyric Square
- 03 The Broadway
- 04 Tesco Express
- 05 Sainsbury's Local

**● HOME FROM HOME**

- 01 Novotel
- 02 Holiday Inn Express
- 03 St Paul's Hotel

**● FITNESS MEETS FUN**

- 01 Riverside Studios
- 02 The Queens Club
- 03 Hammersmith Apollo
- 04 Virgin Active
- 05 Lyric Theatre
- 06 Boom Cycle
- 07 Puregym
- 08 Brook Green Tennis club







# The River Cafe

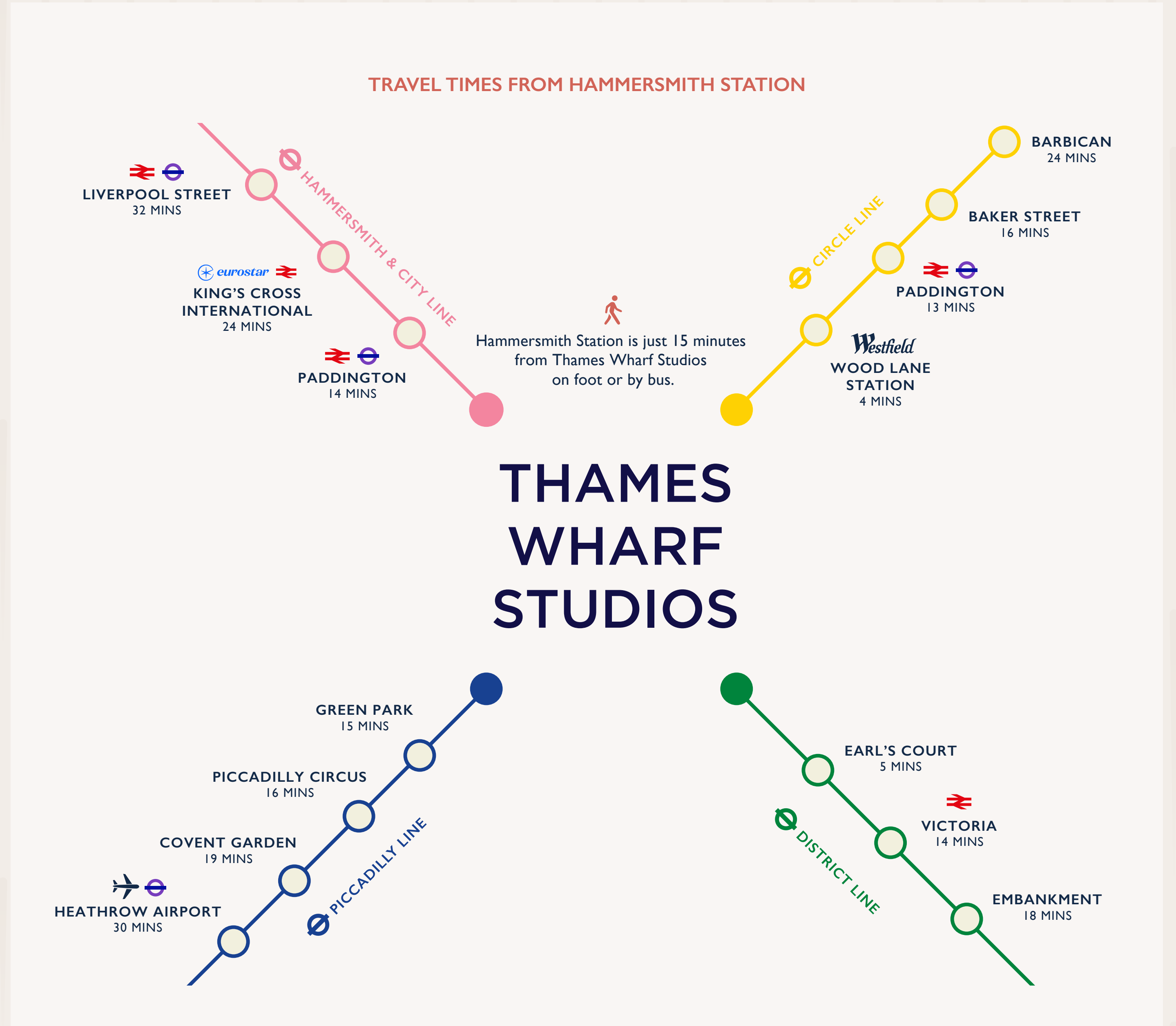




# CONNECTED ACROSS LONDON AND BEYOND

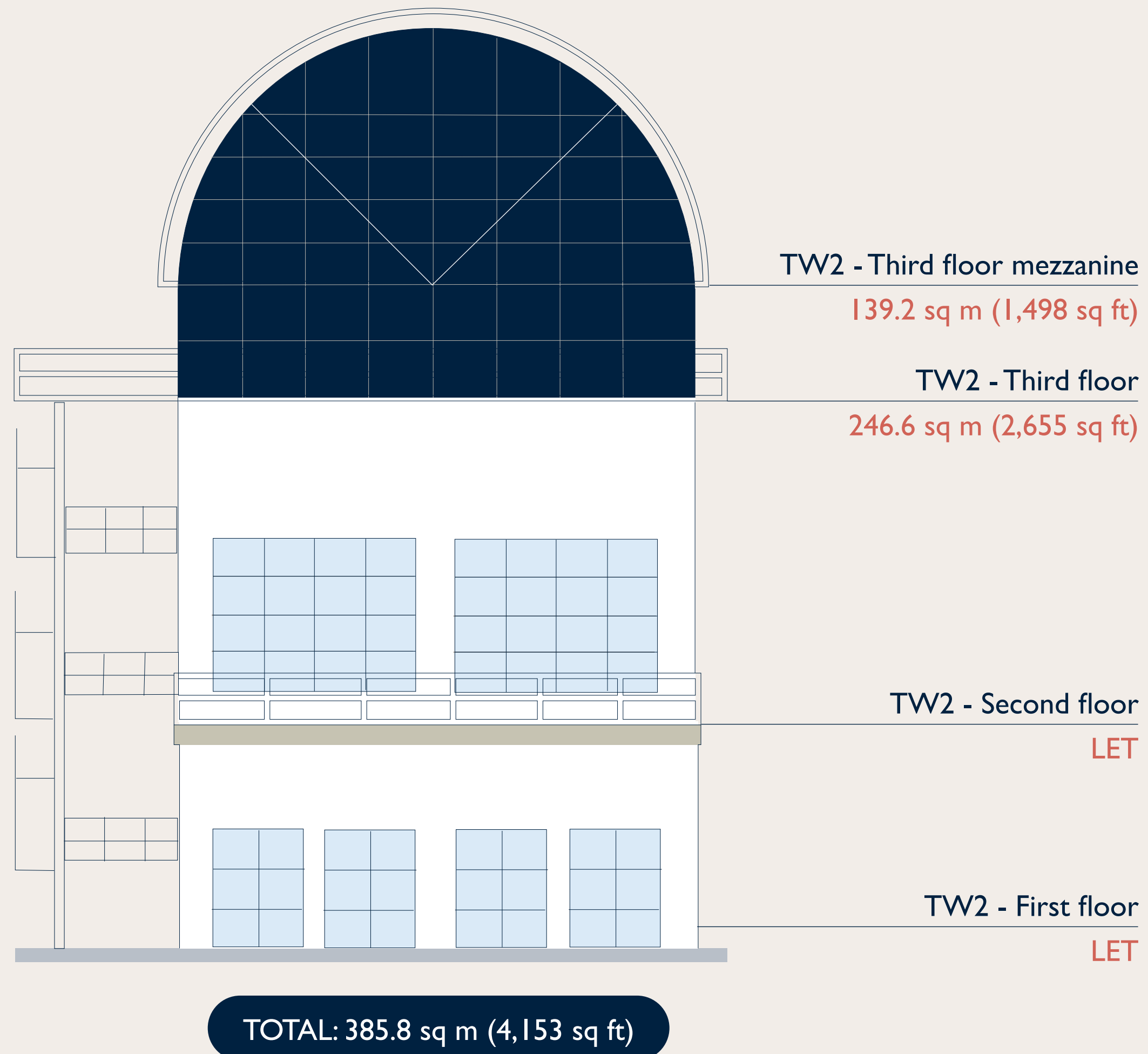
Hammersmith has excellent transport links, making it ideal for commuters and visitors. Hammersmith Underground Station connects to the Hammersmith & City, Circle, District and Piccadilly lines, while numerous bus routes serve the area. Major roads like the M4/A4 also provide easy car access to Central London and nearby areas.

<p><b>17</b></p> <p>Bus routes on your doorstep</p>	<p><b>20</b></p> <p>Minutes direct to the West End by tube</p>	<p><b>M4</b></p> <p>M4 and A4 just minutes away, connecting you by road</p>
<p><b>14</b></p> <p>Minutes to the Elizabeth Line via Paddington Station</p>	<p><b>20</b></p> <p>Minutes to Heathrow via A4/M4</p>	<p><b>4</b></p> <p>Underground lines from Hammersmith Station</p>





# AVAILABLE SPACE IN AN ICONIC BUILDING



## SPECIFICATION

 <p>Comprehensively refurbished studios</p>	 <p>LED lighting</p>	 <p>Central heating</p>	 <p>Lifts</p>
 <p>Fitted kitchenette and on-floor shower</p>	 <p>On-site car parking</p>	 <p>Panoramic river views</p>	 <p>On-site security</p>













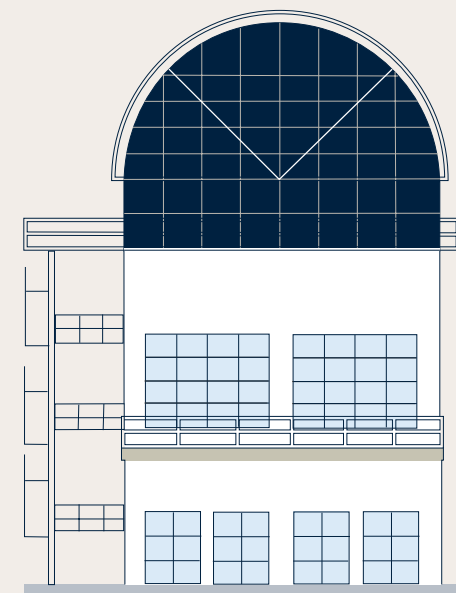


# INDICATIVE THIRD FLOOR PLANS

LOWER LEVEL

GENERAL ARRANGEMENT

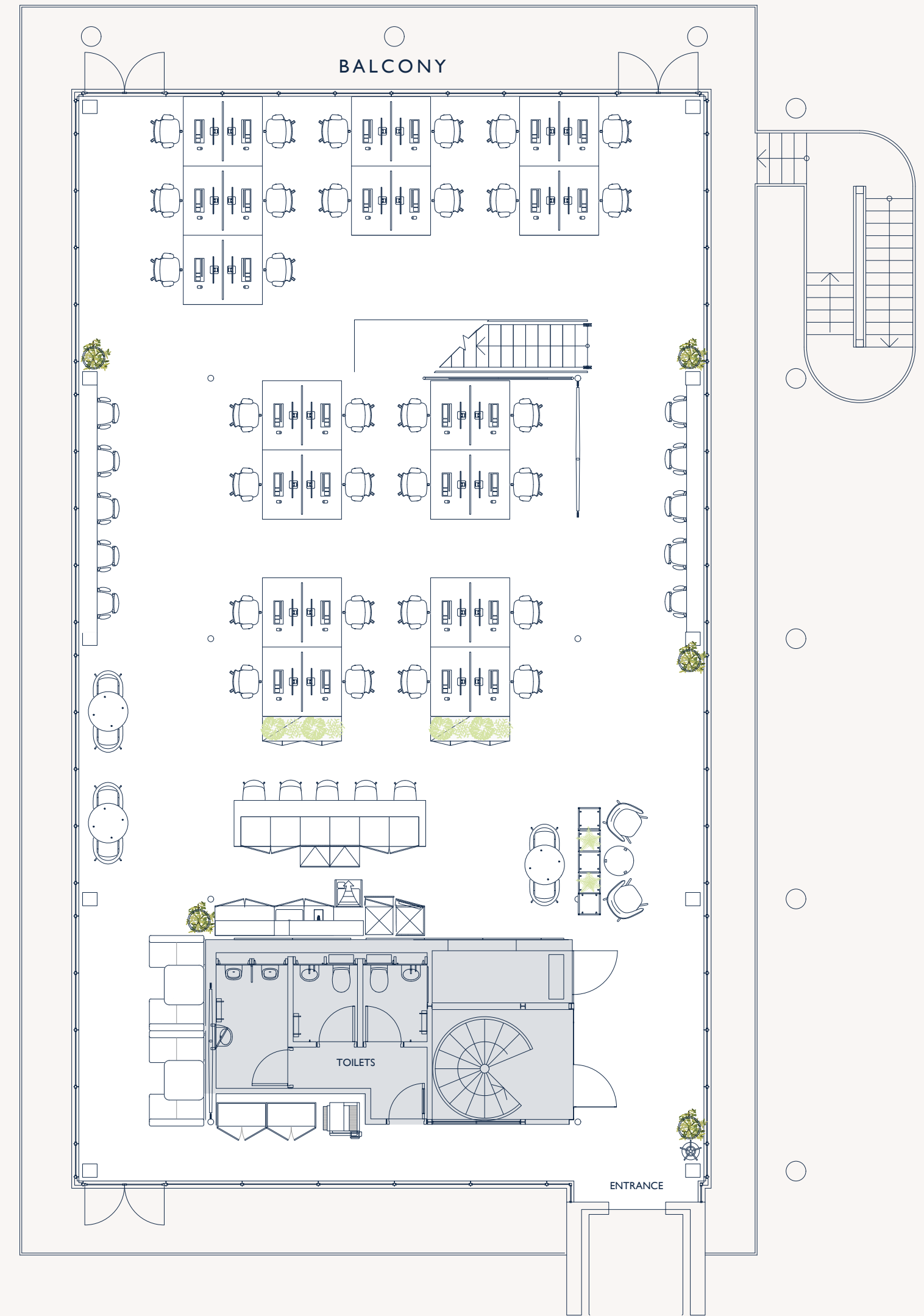
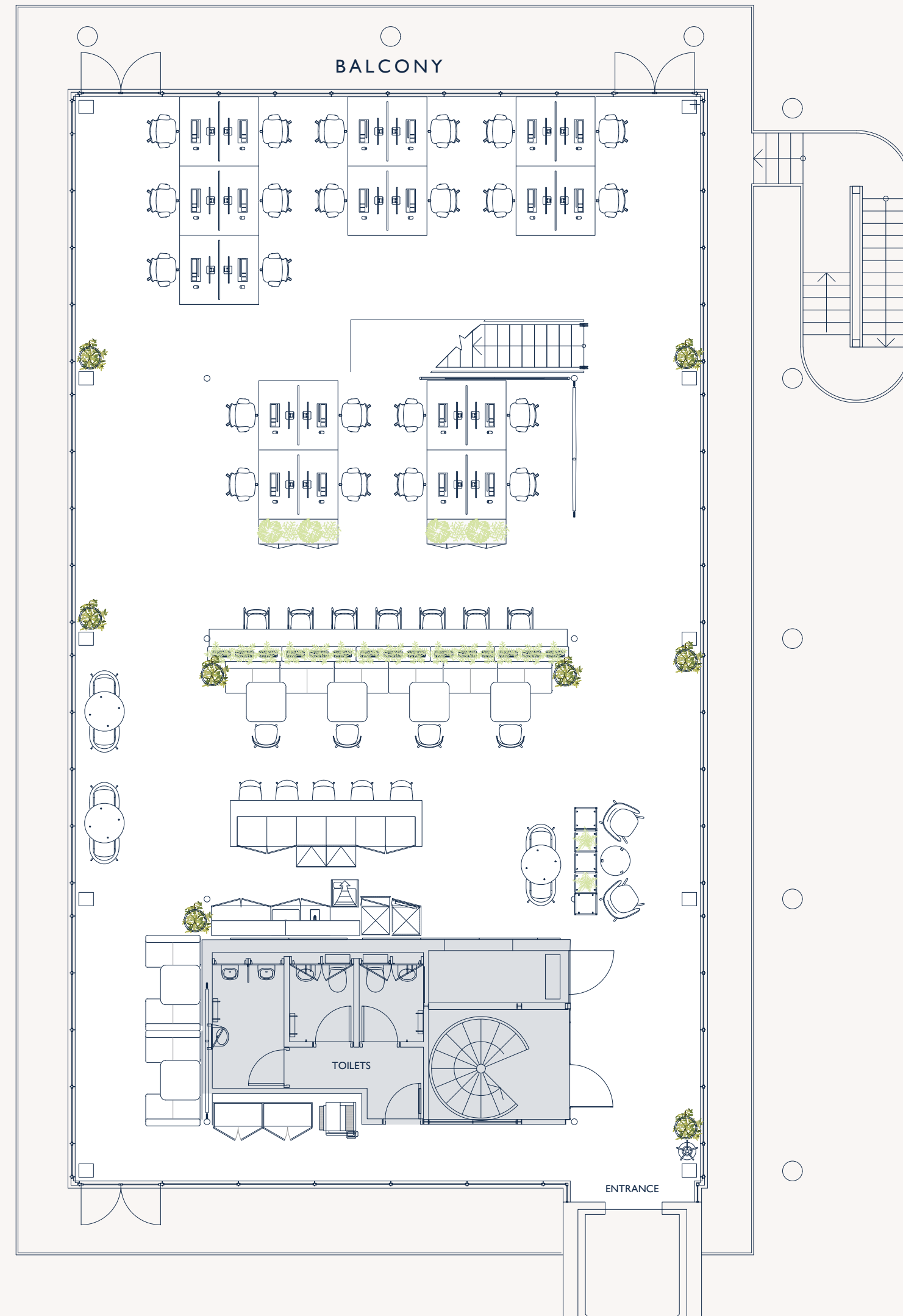
HIGH DENSITY ARRANGEMENT



**Key**

Office Core

Space plans not to scale. Indicative only.



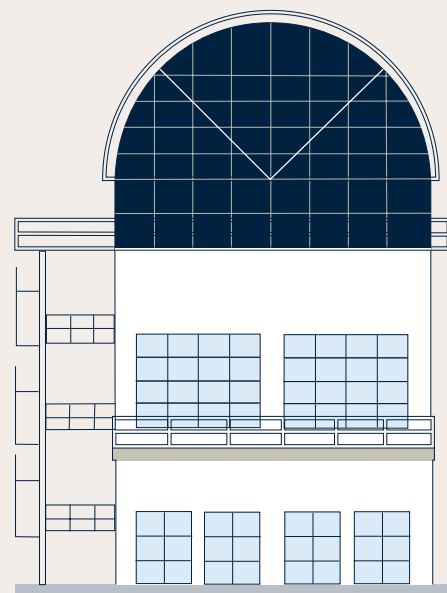


# INDICATIVE MEZZANINE PLANS

MEZZANINE

GENERAL ARRANGEMENT

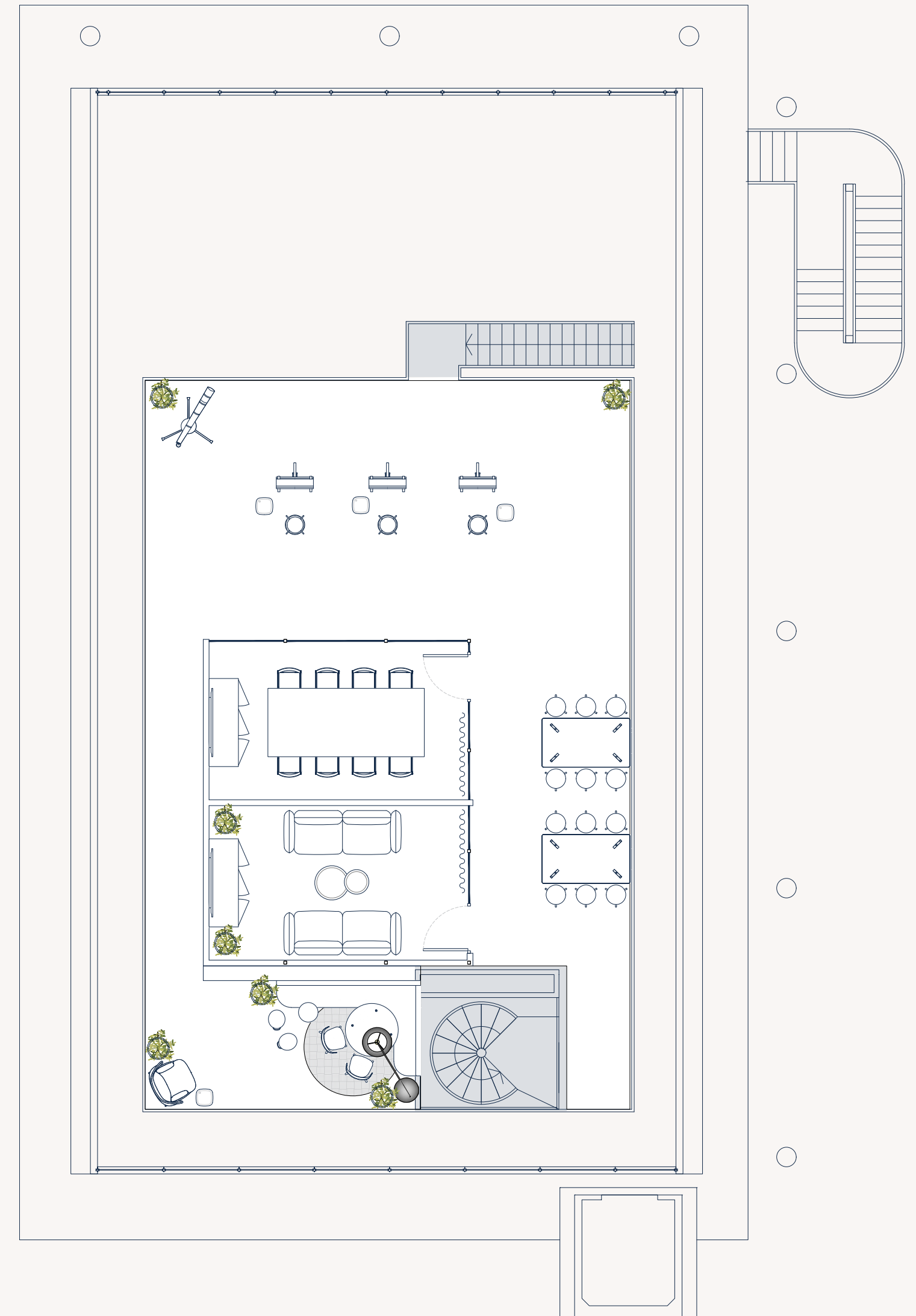
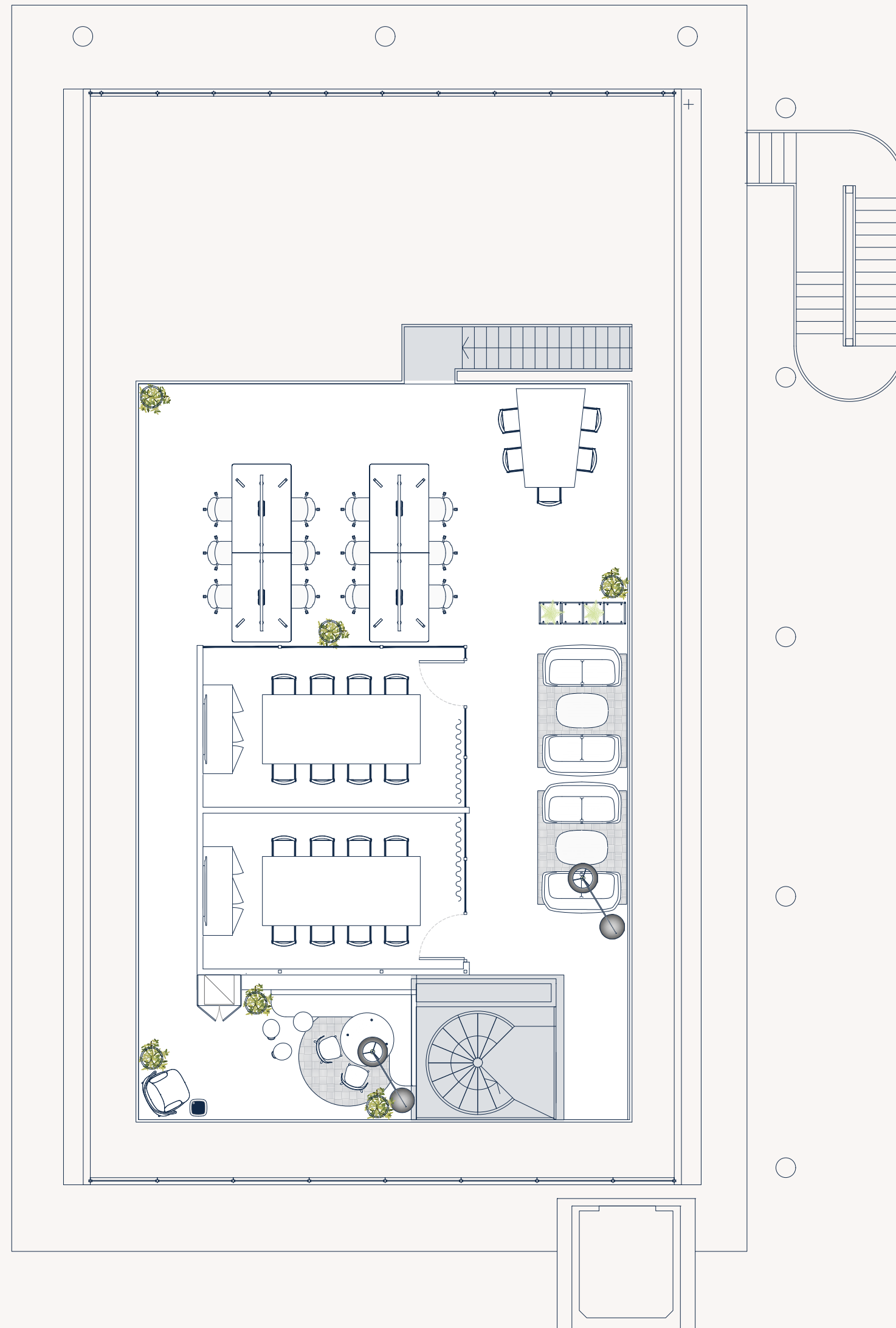
GENERAL ARRANGEMENT - CREATIVE



**Key**

Office Core

Space plans not to scale. Indicative only.





# INDICATIVE FIT OUT CONCEPTS





# FURTHER INFORMATION

thameswharfstudios.co.uk

## TERMS

New FRI lease(s) for a term by arrangement.

## VIEWING

For further information or to arrange a viewing,  
please contact the joint sole agents.

frost  
meadowcroft

Shaun Wolfe  
swolfe@frostmeadowcroft.com  
07900 911135

Jack Realey  
jrealey@frostmeadowcroft.com  
07879 228 991

 HanoverGreen

David Cuthbert  
dcuthbert@hanovergreen.co.uk  
07710 183 423

Harry Pruden  
hpruden@hanovergreen.co.uk  
07721 128 796

Frost Meadowcroft and Hanover Green LLP for themselves and for vendors or lessors of this property whose agents they are give notice that: (i) The particulars are set out as a general outline only for the guidance of intended purchasers or lessees, and do not constitute, nor constitute part of, an offer or contract (ii) All descriptions, dimensions, references to condition and necessary permission for use and occupation, and other details are given without responsibility and any intending purchasers or tenants should not rely on them as statements or representations of fact but must satisfy themselves by inspection or otherwise as to the correctness of each of them (iii) If for any reason an interested party wishes to rely on any aspect of the particulars or statement at any particular date without further investigation such interested party should seek direct written confirmation from Frost Meadowcroft and Hanover Green LLP (iv) No person in the employment of Frost Meadowcroft and Hanover Green LLP has any authority to make or give any representation or warranty whatever in relation to this property. February 2025.